

HAVAL



IN CHARGE. UNPLUGGED.
INTRODUCING THE ALL-NEW **HAVAL JOLION HYBRID**

HEV
Hybrid Electric Vehicle

INTUITIVE. THE NEW JOLION HEV.

intuitive

/ɪnˈtjuː.ɪtv/

Adjective

Using or based on what one feels to be true even without conscious reasoning; instinctive. The instinct of understanding. "their intuitive understanding of the drivers' real needs".

Late 15th century (originally used of sight, in the sense 'accurate, unerring'): from medieval Latin intuitivus, from Latin intueri.

The Haval Jolion HEV is an innovative self-charging hybrid vehicle that can adapt to its driving environment, and has redefined intelligent and innovative technology to create a noticeably different and new hybrid experience.

Experience these advancements in technology and design found in the new Haval Jolion HEV.



THE POWER OF HYBRID ENERGY

The new Jolion HEV's responsive 1.5L Hybrid Engine steers in a new era of HAVAL Hybrid technology.

Sophisticated power balancing is provided by non-plug-in technology, allowing the vehicle to operate solely on electric power or through a combination of electric and Internal Combustion Engine (ICE).

It's all about balance, and this Hybrid Electric Vehicle knows when to switch over, seamlessly.

When travelling during normal daily driving, pure electric power is intuitively "switched on." Increased speed and acceleration will ultimately cause the HEV's Internal Combustion Engine (ICE) to start working and supply the extra power when you need it the most.

Make a change when you want to, with Driving Modes including Standard, Eco, Sports, and Snow. Choose how you want to handle your drive with the Dynamic Adjustable Steering Modes: Light, Comfort, and Sports.

And forget standard starts, enjoy advanced driving assistance with the performance-inspired Launch Control system that facilitates quick acceleration. The HEV's response is intelligent enough to give you a combined fuel consumption of around 5L /100km. This takes fuel efficiency to a previously unimagined level. Alongside its Dedicated Hybrid Transmission (DHT), the Jolion HEV delivers an impressive power output of 140kW and a maximum torque of 375Nm.



FUTURISTIC **COMFORT** AND **CONVENIENCE**

The HAVAL Jolion HEV is available in two premium variants: Luxury and Super Luxury, both delivering equal measures of styling superiority.

Smart Keyless Entry with a Push Start Button is standard in both Luxury and Super Luxury models.

The Panoramic Sunroof adds space and dimension to the already roomy cabin. A soft-to-the-touch 10.25-inch Multimedia Touch Display and 7-inch Colour Instrument Cluster allows you to connect to your outside world. With your driving comfort in mind, the HAVAL Jolion HEV has ample legroom and a generous boot size perfect for those trips that sometimes require extra packing space.



Digital Instrument Panel



Heated Front Seats



12.3 inch Full-colour Touch Screen



Rotary Shift



Panoramic Sunroof



6-Way Electric Adjustable Driver's Seat



OFF 8:11 PM 10:02

- Tuner
- Music
- Phone
- Settings
- Vehicle Setting
- Messaging
- Apple CarPlay
- Image
- Video
- Android Auto

RECOV

MAZDA

MAZDA

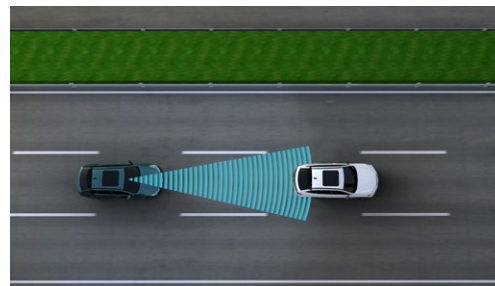
YOUR SAFETY IN MIND

Safety standards are never compromised but optimised.

Electronic Stability System (ESC), Traction Control (TCS) and ABS + EBD (Electronic Brakeforce Distribution) is all standard in the new Haval Jolion HEV.

If you're looking for a range of super-premium safety features, the Haval Jolion HEV Super Luxury Model has it all and so much more:

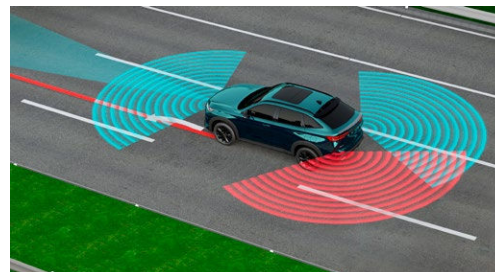
- 360° Panoramic Camera
- Adaptive Cruise (ACC)
- Traffic Jam Assist (TJA) and Intelligent Turning Assist
- Lane Departure Alert (LDW)
- Lane Keeping Assist (LKA)



ACC (Adaptive Cruise Control) + ICA (Intelligent Cruise Assistance) + TJA (Traffic Jam Assistance)



TSR (Traffic Sign Recognition) Left Hand Drive shown for illustration purposes



LKA (Lane Keep Assist)

IT'S ALL ABOUT YOU

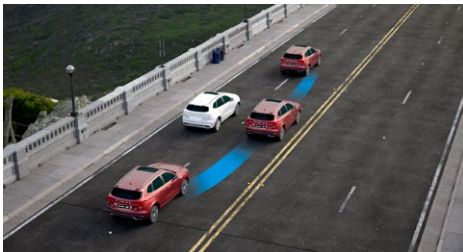
The HAVAL Jolion HEV boasts a long list of innovative safety technologies that give you total peace of mind.

Wherever you're headed, the HAVAL Jolion HEV ensures that you and your precious cargo are always safe and protected.



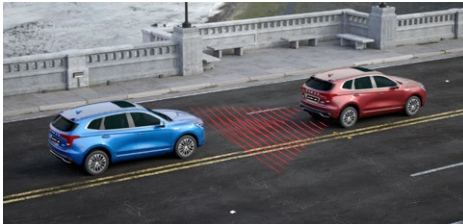
360° CAMERA - SEE EVERYTHING AROUND YOU

- Avoid safety hazards with 360° vision around your vehicle.
- Four wide-angle cameras are set up on the front and back, right and left of the vehicle. The 360° HD view ensures zero blind spots.
- This system can detect the collision risk around the vehicle and gives a timely audible warning to avoid accidents.



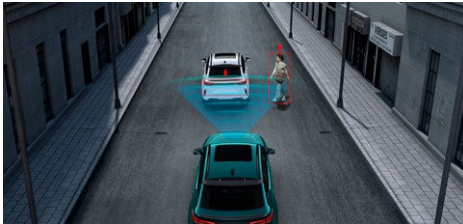
INTELLIGENT DODGE - SMART TECHNOLOGY TO KEEP YOU SAFE

- Smart Collision Avoidance System.
- When activated, the system will control the vehicle to ensure that a safe distance is kept when overtaking large vehicles.
- Once the vehicle has moved past the truck or long vehicle, it will move back to its correct position between the lane lines.



REAR COLLISION WARNING - A SIXTH SENSE

- An alarm is triggered when another vehicle is approaching at a higher speed.
- Driver will be alerted with double flashes and a warning tone, avoiding rear-end collisions.



AUTOMATIC EMERGENCY BRAKING (AEB) - WHEN YOU NEED IT MOST

- Avoid danger caused by a braking vehicle or sudden movement of a pedestrian at slower speeds.
- AEB is able to start braking automatically to prevent a collision or at least limit its impact when driving under 60km/h.

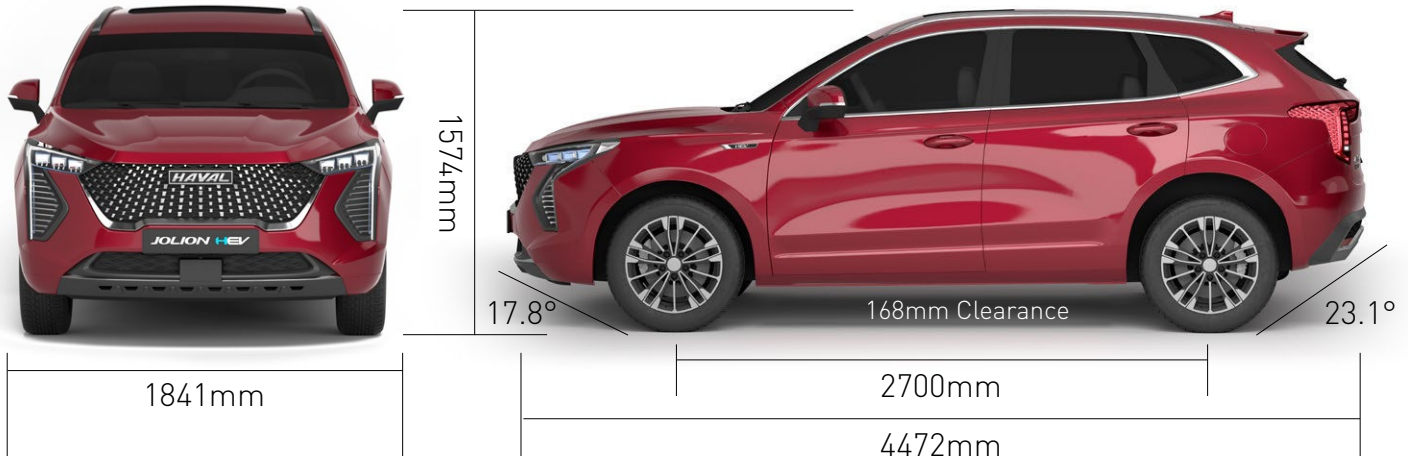
EMBRACE THE DIFFERENCE

Reshaping the future of innovation, begins with intuitive design. The Haval Jolion HEV features the characteristic standout Diamond Front Grille, Silver Roof Rails that mimics its natural lines, Flared Rear Brake Lights, Sports Alloy Wheels, and Dual Vent Rear Spoilers. All these features combine to deliver a visual experience that's stylish, distinctive, and bold.





DIMENSIONS



COLOURS



HB Blue



Crystal Black



Hamilton White



Mars Red



Ayers Grey

SPECIFICATIONS

HAVAL JOLION Hybrid

Engine	1,5L Hybrid	
Maximum Combined Power (kW)	140kW	
Maximum Combined Torque (Nm)	375Nm	
Overall Dimensions - Length x Width x Height (mm)	4472 x 1841 x 1574	
Fuel Economy - Combined litres/100km (Under Test Conditions)	5.0	
Transmission	DHT	
Grade	Luxury	Super Luxury
Steering and Chassis		
Speed Sensitive Electric Steering	•	•
Adjustable Steering	•	•
Four Wheel Disc Brakes	•	•
Electronic Parking Brake (EPB)	•	•
Driving Modes (Standard, Eco, Sports, Snow)	•	•
Dynamic Steering Modes (Sport, Comfort, Light)	•	•
Launch Control	•	•
Cruise Control	•	X
Exterior Specifications		
215/60 R17 Sports Alloy Wheels	•	X
225/55 R18 Sports Alloy Wheels	X	•
Panoramic Sunroof	•	•
Silver Roof Rails	•	•
Diamond Front Grille	•	•
Sport Rear Diffuser	•	•
Dual Vent Rear Spoiler	•	•

Interior Specifications		
Artificial Leather Steering Wheel	•	•
7" Colour Instrument Cluster (LCD)	•	•
Driver and Passenger Sunvisor Mirror	•	•
Wireless Charger	x	•
Front 12V Power Outlet	•	•
Dashcam Power Outlet	•	•
Seating		
Driver Seat 6-way Electric Adjust	•	•
Passenger Seat 4-way Manual Adjust	•	•
60:40 Split with Folding Rear Seats	•	•
Heated Front Seats (Driver & Passenger)	x	•
Safety & Security		
Dual Front, Side and Curtain Airbags	•	•
Child Safety Lock	•	•
Electronic Brakeforce Distribution (ABS+EBD) + Brake Assist (BA)	•	•
Electronic Stability Control (ESC) & Traction Control (TCS)	•	•
Anti-Roll System (RMI) + Secondary Collision Mitigation (SCM)	•	•
Uphill + Downhill Assist	•	•
Tyre Pressure Monitoring System (TPMS)	•	•
Rear Parking Sensors (3)	•	•
Reverse Camera with Guidelines	•	x
360° Camera with Panoramic View	x	•
Adaptive Cruise Control (ACC), Traffic Jam Assist (TJA) + Intelligent Turning Assist	x	•
Traffic Sign Recognition (TSR)	x	•
Pre-Collision Warning + Automatic Emergency Braking (AEB Pedestrian + Cyclist)	x	•
Lane Departure Warning (LDW), Lane Keeping Assist (LKA) + Lane Centre Keeping (LCK)	x	•
Blind Spot Detection + Lane Change Assist	x	•
Driver Fatigue Alert	•	•

Keyless Entry + Push Button Start	•	•
Anti-Theft Alarm System	•	•
Head-Up Display (W-HUD)	x	•
Infotainment		
Bluetooth Handsfree + Front, Rear Dual USB Connector	•	•
10.25" Multimedia Touch Display	•	x
12.3" Multimedia Touch Display	x	•
6 Speakers: 2 Treble, 2 Bass + 2 Full Range	•	•
Speed Sensitive Volume Control	•	•
Glass and Mirror		
Automatic Anti-Glare Mirrors	•	•
Carlock + Remote Window Close	•	•
Electrically Adjustable Exterior Mirror	•	•
Electrically Retractable Heated Exterior Mirror	•	•
Lighting		
Automatic Headlights	•	•
LED Premium Vision Headlights	•	•
Electric Height-Adjusting Headlights + Follow Me Home	•	•
Rear Fog Lamp + High Brake Lamp	•	•
Daytime Running Lamps	•	•
Air Conditioner		
Automatic Dual Zone Aircon	•	•
Rear Aircon Vents	•	•
Service & Warranty		
Service Interval	12 months / 15 000km	
Service Plan	4 services / 60 000km	
Warranty	5 years / 100 000km	
Hybrid Power Battery System Warranty	8 years / 150 000km	

Visual used for illustrative purposes only. Specifications may vary from model to model. *Region specific.

HAVAL



HEV
Hybrid Electric Vehicle