



THE NEW  
**HAVAL H6**





# BUILT FOR BIG MOMENTS

Contents	01
Introduction	03
Design	04
Performance	07
Technology	10
Safety	18
Hybrid	22
GWM Care	25
Colour	27
Specifications	28





# SAY HELLO TO GWM.

For 18 years, GWM has actively shaped the South African automotive industry.

Our unwavering commitment to excellence is evident in our world-class SUVs and bakkies, and we've taken a definitive leadership position, pioneering the way in New Energy Vehicle mobility for South African drivers.

As a major global automotive player with over 14.9 million vehicles sold in 170+ countries, GWM's vision is to lead global mobility through cutting-edge technology.

This global expertise fuels our deep commitment to South Africa, where we invest boldly in R&D for continuous innovation.

The new Haval H6 exemplifies purposeful innovation. It has been reimagined with refined design, enhanced performance, and intelligent upgrades that elevate every journey, moving you forward with confidence and style.



# DESIGNED FOR THE MOMENTS THAT MATTER

From its bold front to its chic rear, the new H6 is designed with every little detail in mind. Whether you're popping out for family errands or just chasing the sunsets, it's the kind of companion that makes even the little moments feel like something more.



- 01 Make your mark from the moment you arrive with the H6's Signature Front Grille.
- 02 Light up the night, the Haval H6 way with these high-end LED Tail Lights.
- 03 The perfect finish, right down to the rims, with the 19" Alloy Wheels\*.
- 04 Experience something more luxurious, and relax into the Leather Accented Seats.
- 05 A luxurious cabin design, where comfort and class are standard.



# PERFORMANCE AND POWER

For the moments that move you.







# EXPERIENCE MORE DRIVING MODES

The 9-speed Dual Clutch Transmission delivers quicker throttle response and enhanced efficiency, giving you smoother, sharper gear shifts and a more connected drive.

Meanwhile, the intelligent 4WD system can adjust torque between the front and rear wheels, keeping you confidently in control, no matter the terrain.

The H6's 2.0-litre Turbo Petrol Engine delivers power and performance that's seamlessly responsive.





# REFINED INTELLIGENCE FOR EVERY JOURNEY

The new H6 is a tech-smart SUV. From effortless Auto Parking Assist to a Heated Leather Steering Wheel for those chilly early drives.





COMFORT, CONVENIENCE,  
AND CLASS IN ONE TRULY  
DISTINGUISHED SUV





- 01 Enjoy effortless access with the convenient Electric Tailgate, complete with intelligent Memory Function.
- 02 The 6-way Electric Adjustable Driver Seat\* tailored to your drive, every single time.
- 03 8-Speaker Audio System delivering a richer, more immersive sound experience.
- 04 With Voice Command, take control of the road with just your voice.
- 05 A sleek, Column-Mounted Design replaces the rotary gear shifter, freeing up space and enhancing control.





- 06 Get the full view with the 10.25" Colour Instrument Cluster.
- 07 Touch, swipe, go – it's all at your fingertips with the 14.6" Colour Multi-Point Touchscreen.
- 08 With the Head-Up Display\*, you get all the essential info. No distractions. Just driving.
- 09 Freedom and function with Wireless Android Auto & Apple Carplay®





THE NEW Haval H6 IS PACKED WITH ADVANCED SAFETY TECH TO HELP KEEP YOU AND THOSE AROUND YOU PROTECTED ON EVERY JOURNEY.



## INTUITIVE SAFETY

Drive with enhanced confidence, supported by intelligent safety technologies. Features like Adaptive Cruise Control and Lane Keep Assist actively support your drive, while systems such as Blind Spot Detection and Rear Cross Traffic Assist\* heighten your awareness.

The 540° Panoramic Camera offers unparalleled visibility, complemented by Auto Emergency Braking for critical intervention and Auto Parking Assist\* for effortless manoeuvres.



# DRIVEN BY HYBRID EFFICIENCY

Experience a smooth, responsive drive in the new Haval H6 HEV, intelligently engineered for reduced fuel consumption without compromising performance.



At the heart of GWM's electrification journey lies Dedicated Hybrid Technology (DHT), a seamlessly integrated, multi-mode petrol-electric system powered by a high-performance Lithium-Ion battery.

This advanced setup offers enhanced efficiency, improved performance, and ultra-quiet operation.

Whether you're navigating city streets or cruising across the country, the multi-mode hybrid transmission ensures effortless take-offs and impressive acceleration, combining driving pleasure with long-term fuel savings.

The new H6 HEV's hybrid system, pairing a 1.5L turbo petrol engine with an electric motor and battery, delivers a convincing 179 kW and 530 Nm of torque.





# MORE CARE. MORE MOMENTS.

GWM has upgraded its warranty and service plans across the full vehicle lineup, adding confidence and seamless support for every driver.

With extended coverage and enhanced servicing, H6 owners can now enjoy even more peace of mind, reliability, and long-term value on every drive.

- 7** Years  
200 000 km  
Warranty
- 7** Years  
Unlimited km  
Roadside Assistance
- 7** Years  
75 000 km  
Service Plan
- 8** Years  
150 000 km  
High Voltage Battery  
System Warranty
- 12** Months  
15 000 km  
Service Intervals



**GWM CARES**  
for your peace of mind





# EVERY SHADE OF SOPHISTICATION

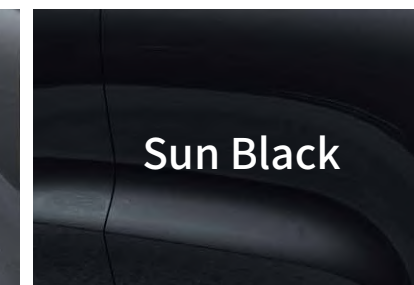
Select your perfect new Haval H6 from a range of stunning contemporary colours.



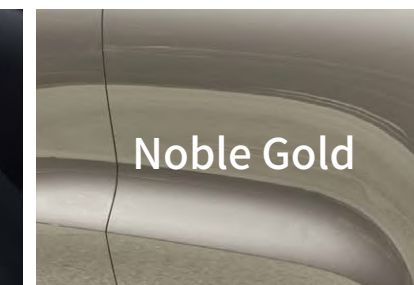
Hamilton White



Ayers Gray



Sun Black



Noble Gold



MODELS	H6 2.0T LUXURY 2WD 9DCT	H6 2.0T SUPER LUXURY 2WD 9DCT	H6 2.0T LUXURY 4WD 9DCT	H6 2.0T ULTRA LUXURY 4WD 9DCT	H6 1.5T DHT LUXURY 2WD HYBRID	H6 1.5T DHT ULTRA LUXURY 2WD HYBRID
POWERTRAIN						
Engine	2.0T				1.5T HEV	
Power and Torque	170 kW / 380 Nm				179 kW / 530 Nm	
Transmission	9DCT				DHT	
Propellant	Petrol				Petrol & Electric	
Towing Capacity	2 000 kg				1 500 kg	
DIMENSIONS						
Length	4 703 mm					
Width	1886 mm					
Height	1730 mm					
Wheelbase	2 738 mm					
CHASSIS STEERING						
Smart Start-Stop	●	●	●	●	×	×
Gear Shift Lever	●	●	●	●	●	●
Electronic Parking Brake (EPB)	●	●	●	●	●	●
Auto Hold	●	●	●	●	●	●
225/55 R19 Tyres	●	●	●	●	×	×
235/55 R19 Run-Flat Tyres	×	×	×	×	●	●
T135 90 R17 Spare Wheel	●	●	●	×	×	×
T145 80 R18 Spare Wheel	×	×	×	●	×	×
Front Ventilated Disc / Rear Disc Brake	●	●	●	●	●	●
Driving Modes: Standard, Economy, Sport, Snow	●	●	×	×	×	×
Driving Mode: Standard, Economy, Sport, Snow, Sand, Off-Road	×	×	●	●	×	×
Driving Modes (DHT): Economy, Sport, Standard, Snow	×	×	×	×	●	●
Macpherson Independent Front Suspension	●	●	●	●	●	●
Multi-Link Independent Rear Suspension	●	●	●	●	●	●
Braking Torque Control (BTC)	●	●	●	●	●	●
Electric Power Steering	●	●	●	●	●	●
Adjustable Power Steering Modes: Sport, Comfortable, Light	●	●	●	●	●	●

● = Standard      ✕ = Not Available

MODELS	H6 2.0T LUXURY 2WD 9DCT	H6 2.0T SUPER LUXURY 2WD 9DCT	H6 2.0T LUXURY 4WD 9DCT	H6 2.0T ULTRA LUXURY 4WD 9DCT	H6 1.5T DHT LUXURY 2WD HYBRID	H6 1.5T DHT ULTRA LUXURY 2WD HYBRID
COLOURS						
Hamilton White	●	●	●	●	●	●
Ayers Gray	●	●	●	●	●	●
Sun Black	●	●	●	●	●	●
Noble Gold	●	●	●	●	●	●
EXTERIOR FEATURES						
Manual Tailgate	●	✕	●	✕	✕	✕
Hands-Free Electric Tailgate	✕	●	✕	●	●	●
Rain-Sensing Wipers	●	●	●	●	●	●
Panoramic Sunroof	✕	●	✕	●	✕	●
Roof Rails	●	●	●	●	●	●
INTERIOR FEATURES						
Multi-Function Steering Wheel	●	●	●	●	●	●
Leatherette Steering Wheel	●	●	●	●	●	●
Heated Steering Wheel	✕	●	✕	●	✕	●
4-Way Manual Adjustable Steering Wheel	●	●	●	●	●	●
Stainless Steel Sills	✕	●	✕	●	✕	●
Sunvisor with Vanity Mirror and Lighting	●	●	●	●	●	●
Wireless Charging (50W)	●	●	●	●	●	●
12V Power Supply (Luggage Compartment)	●	●	●	●	●	●
Cargo Cover	●	●	●	●	●	●
SEATS						
Leatherette Seat Trim	●	●	●	●	●	●
6-Way Electric Adjustable Driver Seat	●	●	●	●	●	●
2-Way Electric Adjustable Driver’ s Seat Lumbar Support	✕	●	✕	●	✕	●
Driver's Seat Memory	✕	●	✕	●	✕	●
4-Way Manual Adjustable Passenger Seat	●	✕	●	✕	●	✕
4-Way Electric Adjustable Passenger Seat	✕	●	✕	●	✕	●
Heated Front Seats	✕	●	✕	●	✕	●
Ventilated Front Seats	✕	●	✕	●	✕	●
Second-Row Seats Centre Armrest with Cup Holders	●	●	●	●	●	●
6:4 Split Second-Row Seats	●	●	●	●	●	●

● = Standard      ✕ = Not Available



MODELS	H6 2.0T LUXURY 2WD 9DCT	H6 2.0T SUPER LUXURY 2WD 9DCT	H6 2.0T LUXURY 4WD 9DCT	H6 2.0T ULTRA LUXURY 4WD 9DCT	H6 1.5T DHT LUXURY 2WD HYBRID	H6 1.5T DHT ULTRA LUXURY 2WD HYBRID
ACTIVE SAFETY						
Electronic Stability Control (ESC)	●	●	●	●	●	●
Traction Control (TCS)	●	●	●	●	●	●
Roll-Over Mitigation System (RMI)	●	●	●	●	●	●
Brake Assist (BA)	●	●	●	●	●	●
Hill-Descent Control (HDC)	●	●	●	●	●	●
Hill-Start Assist (HSA)	●	●	●	●	●	●
Tire Pressure Monitoring System (TPMS)	●	●	●	●	●	●
USB Interface for Dashcam Power Supply	●	●	●	●	●	●
Autonomous Parking System	×	×	×	●	×	●
Reversing Radar	●	●	●	●	●	●
540° Panoramic Camera (360° and Transparent Chassis View)	●	●	●	●	●	●
Adaptive Cruise Control (ACC)	●	●	●	●	●	●
Intelligent Speed Limit Assist (IACC)	●	●	●	●	●	●
Intelligent Cruise Assist (ICA)	●	●	●	●	●	●
Autonomous Emergency Braking (AEB) with Forward Collision Warning (FCW)	●	●	●	●	●	●
Autonomous Emergency Braking (AEB-Pedestrian and Cyclist)	●	●	●	●	●	●
Autonomous Emergency Braking (AEB-Crossroad)	●	●	●	●	●	●
Intelligent Cornering	●	●	●	●	●	●
Smart Evasive Manoeuvre	●	●	●	●	●	●
Lane Departure Warning (LDW)	●	●	●	●	●	●
Lane Keeping Assist (LKA)	●	●	●	●	●	●
Lane Centring Assist (LCA)	●	●	●	●	●	●
Emergency Lane Keeping (ELK)	×	●	×	●	×	●
Traffic Sign Recognition (TSR)	●	●	●	●	●	●
Traffic Jam Assist (TJA)	●	●	●	●	●	●
Blind-Spot Detection and Parallel Parking Assistance	×	●	×	●	×	●
Rear Cross Traffic Alert (RCTA)	×	●	×	●	×	●
Rear Cross Traffic Braking (RCTB)	×	●	×	●	×	●
Rear Collision Warning (RCW)	×	●	×	●	×	●
Door Open Warning (DOW)	×	●	×	●	×	●
Driver Fatigue Monitoring	●	●	●	●	●	●
Secondary Collision Mitigation (SCM)	●	●	●	●	●	●

● = Standard      × = Not Available

MODELS	H6 2.0T LUXURY 2WD 9DCT	H6 2.0T SUPER LUXURY 2WD 9DCT	H6 2.0T LUXURY 4WD 9DCT	H6 2.0T ULTRA LUXURY 4WD 9DCT	H6 1.5T DHT LUXURY 2WD HYBRID	H6 1.5T DHT ULTRA LUXURY 2WD HYBRID
PASSIVE SAFETY						
Front Double Airbags	●	●	●	●	●	●
Front Side Airbags	●	●	●	●	●	●
Side Curtain Airbags	●	●	●	●	●	●
Front Dual Pretensioning Force-Limiting Seatbelts	●	●	●	●	●	●
Rear Side Pretensioning Force-Limiting Seatbelts	●	●	●	●	●	●
Rear Centre 3-Point Seatbelt	●	●	●	●	●	●
Seatbelt Reminder (Front and Rear Seats)	●	●	●	●	●	●
Mechanical Child Safety Locks	●	●	●	●	●	●
Child Seat Fixtures (ISOFIX)	●	●	●	●	●	●
SECURITY						
Smart Keys	●	●	●	●	●	●
Keyless Smart Entry System	●	●	●	●	●	●
One-Button Start System	●	●	●	●	●	●
Electronic Engine Anti-Theft System	●	●	●	●	●	●
Speed-Sensing Central Door Lock	●	●	●	●	●	●
Remote Control Central Lock	●	●	●	●	●	●
Collision Auto-Unlock Function	●	●	●	●	●	●
Anti-Lockout Function	●	●	●	●	●	●
Door Open Alert	●	●	●	●	●	●
MULTIMEDIA CONFIGURATION						
10.25" Colour Instrument Cluster	●	●	●	●	●	●
Voice Command	●	●	●	●	●	●
FM/AM Radio	●	●	●	●	●	●
Bluetooth® Hands-Free System	●	●	●	●	●	●
14.6" Colour Multi-Point Touchscreen	●	●	●	●	●	●
Front Row Dual USB Ports and Rear Row Dual USB Ports	●	●	●	●	●	●
8 Speakers	●	●	●	×	●	●
9 Speakers (Amor Brand)	×	×	×	●	×	×
Speed Sensitive Volume Adjustment	●	●	●	●	●	●
Wireless Android Auto & Apple Carplay®	●	●	●	●	●	●
Head-Up Display (HUD)	×	×	×	●	×	●

● = Standard      × = Not Available



MODELS	H6 2.0T LUXURY 2WD 9DCT	H6 2.0T SUPER LUXURY 2WD 9DCT	H6 2.0T LUXURY 4WD 9DCT	H6 2.0T ULTRA LUXURY 4WD 9DCT	H6 1.5T DHT LUXURY 2WD HYBRID	H6 1.5T DHT ULTRA LUXURY 2WD HYBRID
GLASS/MIRRORS						
Electronic Anti-Glare Interior Rearview Mirror	●	●	●	●	●	●
Four Door One-Touch Up/Down Windows with Anti-Pinch	●	●	●	●	●	●
Remote Automatic Window Closing	●	●	●	●	●	●
Auto-Folding, Electric Adjustable, Heated Exterior Rearview Mirrors with Puddle Lamp	●	●	●	●	●	●
Heated Rear Window Defrost	●	●	●	●	●	●
LIGHTING						
LED Headlights	●	●	●	●	●	●
LED Taillight	●	●	●	●	●	●
Electric Height-Adjustable Headlights	●	●	●	●	●	●
Automatic Headlights with Follow-Me-Home Feature	●	●	●	●	●	●
Rear Fog Lamps	●	●	●	●	●	●
Daytime Running Lights	●	●	●	●	●	●
Emergency Brake Light Warning	●	●	●	●	●	●
High-Mounted Brake Light	●	●	●	●	●	●
LED Reading Light	●	●	●	●	●	●
Central Roof Light	●	×	●	×	●	×
Side Roof Lights	×	●	×	●	×	●
Ambient Lighting	●	●	●	●	●	●
AIR CONDITIONING						
Dual-Zone Automatic Air Conditioner	●	●	●	●	●	●
Second-Row Air Conditioner Vents	●	●	●	●	●	●
Automatic Defogging for Front Windscreen	●	●	●	●	●	●
WARRANTY AND SERVICE						
Warranty: 7 Years / 200 000 km	●	●	●	●	●	●
High Voltage Battery System Warranty: 8 Years / 150 000 km	×	×	×	×	●	●
Roadside Assistance – 7 Years / Unlimited km	●	●	●	●	●	●
Service Plan – 7 Years / 75 000 km	●	●	●	●	●	●
Service Intervals – 12 Months / 15 000 km	●	●	●	●	●	●

**Notes:** Ts & Cs apply. The information herein is provided as a guide only. Specification is subject to change at any time. Please contact your nearest dealer to confirm current specification. Vehicle/s shown may differ. Date of publication – June 2025. E&OE.



[www.gwm.co.za](http://www.gwm.co.za)

**Notes:** Ts & Cs apply. The information herein is provided as a guide only. Specification is subject to change at any time. Please contact your nearest dealer to confirm current specification. Vehicle/s shown may differ. Date of publication – June 2025. E&OE. 28156

● = Standard      × = Not Available